

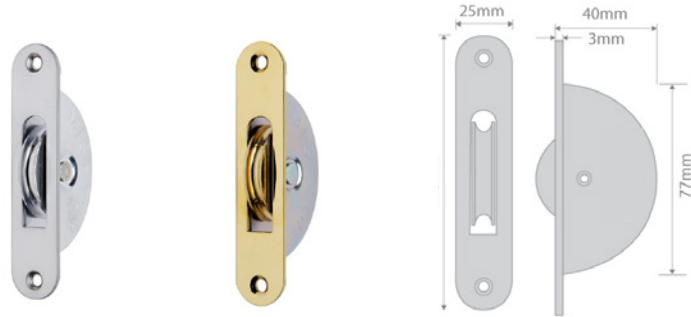
SASH PULLEYS

RADIUS END VERSION

1¾" Sash Pulley with Radius ends for weight and cord applications

KEY FEATURES:

- Sash Weights up to 50kg each
- Fully Sealed Stainless Bearing
- Radius Ends for ease of installation
- Suitable for up to 6mm Cord
- 480 hrs Salt Spray tested (BS EN 1670:2007)



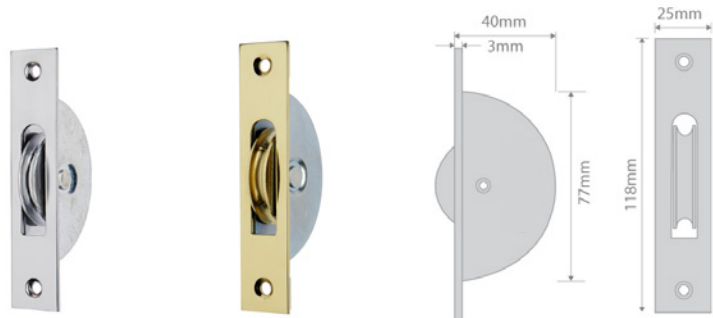
Item Code	Description	Colour	Pulley Size	Inner Box Qty	Outer Box Qty
F-DHP BR	Sash Pulley Brass 118 x 25mm Round End	Pol. Brass	45mm	10	100
F-DHP SC	Sash Pulley SATIN Chr. 118 x 25mm Round End	Satin Chrome	45mm	10	100

RECTANGULAR (TRADITIONAL) END VERSION

1¾" Pulley with Rectangular ends for traditional look and installation

KEY FEATURES:

- Sash Weights up to 50kg each
- Fully Sealed Stainless Bearing
- Suitable for up to 6mm Cord
- 480 hrs Salt Spray tested (BS EN 1670:2007)



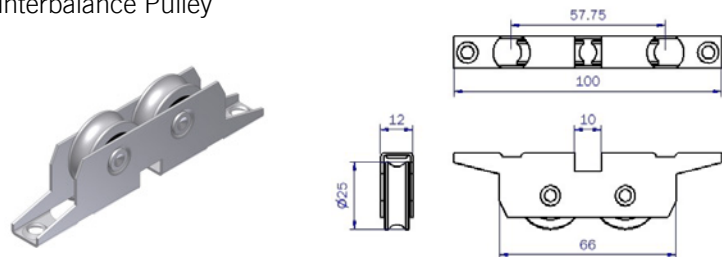
Item Code	Description	Colour	Pulley Size	Inner Box Qty	Outer Box Qty
F-DHPT BR	Sash Pulley Brass 118 x 25mm Rectangular End	Pol. Brass	45mm	10	100
F-DHPT SC	Sash Pulley SATIN Chr. 118 x 25mm Rectangular End	Satin Chrome	45mm	10	100

COUNTERBALANCE VERSION

Genuine Mammoth Twin Wheel Stainless Steel Counterbalance Pulley

KEY FEATURES:

- Sash Weights up to 60kg each
- Fully Sealed Stainless Bearing
- 10yr Warranty (pulleys only)
- Patent No: 765474



Item Code	Description	Colour	Pulley Size	Inner Box Qty	Outer Box Qty
FR-CBP	Twin Wheel Counter Balance Sash Pulley	Stainless Steel	25mm	10	250

SASH PULLEY ACCESSORIES

SASH CORD

KEY FEATURES:

- Pre-stretched for minimal give
- Sash weights up to 60kg each*
- Ideal for Counter Balance or Weight & Cord



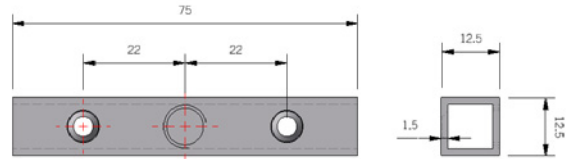
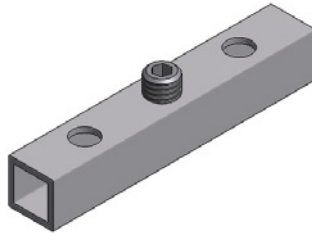
* Dependant on which rope used

Item Code	Description	Colour	Roll Size	Box Qty
R-8P-6W	6mm Pre-Stretched 8 Plait Nylon Cord	White & Silver	100m	1

SASH CORD FASTENER

KEY FEATURES:

- Used for adjusting tension on Sash Cord
- Can be used on 5mm, 6mm or 8mm Cord

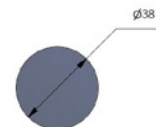
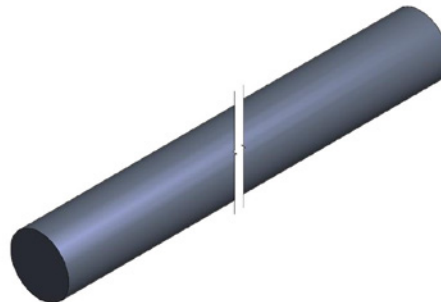


Item Code	Description	Colour	Length	Box Qty
F-SCF	Adjustable Sash Cord Fastener	Mill Finish	75mm	100

LEAD WEIGHT

KEY FEATURES:

- 38mm diameter
- 2m length standard
- 26kg per 2meter length



Item Code	Description	Colour	Length	Box Qty
F-LEAD	Lead Weight 38mm diameter—26kg per 2mtr	Lead	2m	1