



# WINDOWMAKER SOFTWARE



The world's leading software for windows and doors



# Contents

## Introducing Windowmaker

The background to Windowmaker Software 3

## The Windowmaker Configurator

The most advanced product configurator available 4 to 5

## Driving better sales performance

Windowmaker Sales Clients help you sell quickly, accurately and profitably 6 to 7

## Take control of operations

A single solution for the whole organisation 8 to 9

## Automating production

Advanced solutions for lean manufacturing 10 to 11

## Windowmaker Technology & Integration

Delivering Business Intelligence to help you understand your business better 12 to 13

## Delivering the complete solution

Providing a complete service, from consultancy to implementation 14

## Choosing your product

The full Windowmaker product range 15





# Introducing Windowmaker

## More than 20 years experience

Windowmaker Software Ltd is one of the world's leading software companies supplying the window and door industry. With over 20 years of successfully developing and delivering market-leading solutions, Windowmaker has the knowledge and experience to provide customers with a competitive advantage.

## More than 60 countries

Operating in over 60 countries, and with a product that has sold in 18 languages, Windowmaker Software is truly a global company. Experience in many markets means Windowmaker are able to innovate with new technology, work closely with large multi-national organizations and provide a single, adaptable solution for every aspect of the window and door industry.

## More than 50 software developers

With an established international presence built over many years, Windowmaker Software has continually invested in the support and development team. Now numbering over 50 people, this includes teams working on new features and enhancements, as well as a comprehensive testing and support team to ensure the business critical software works first time, every time.

## Microsoft Gold Certified Partner

This commitment to quality, and the development of innovative products with new technology, were reasons why Windowmaker were awarded the status of **Microsoft Gold Certified Partner** - the first in the industry.

This commitment covers the use of the latest Microsoft technology - such Microsoft SQL Server and the Microsoft Dynamics range - and having over 20 Microsoft Certified Professionals in the Software Development Team.



## Committed to quality

Windowmaker Software is committed to quality, both from our product and from our service. That's why our quality systems conform to ISO 9001:2000 TickIT standards.



# The Windowmaker Configurator

The most advanced fenestration configurator available

The Windowmaker Configurator drives the software - with powerful features and unlimited possibilities

**Drag and Drop** functionality allows the user to quickly create and process simple designs from the options

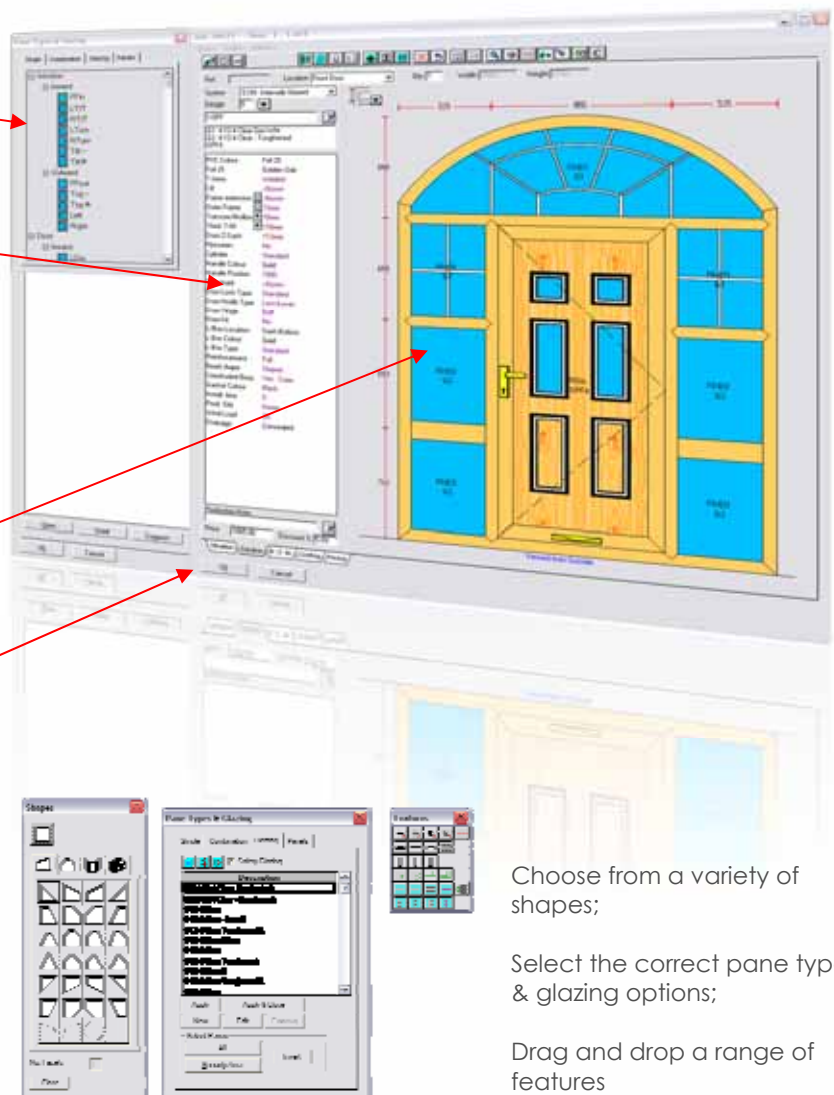
Choose from a **customised list of options**

Display the **frames, glass and components** during order entry

Full colour, **detailed scaled graphics**

Windowmaker **instantly displays, and updates, pricing**

Use **Keyboard shortcuts** to reduce order processing time

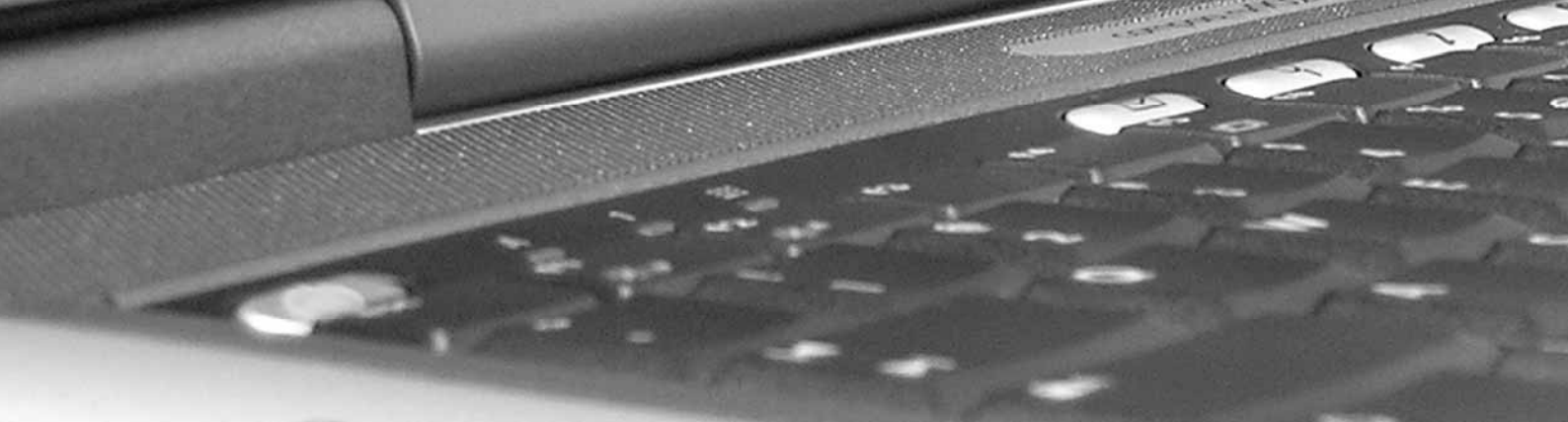


Choose from a variety of shapes;

Select the correct pane type & glazing options;

Drag and drop a range of features



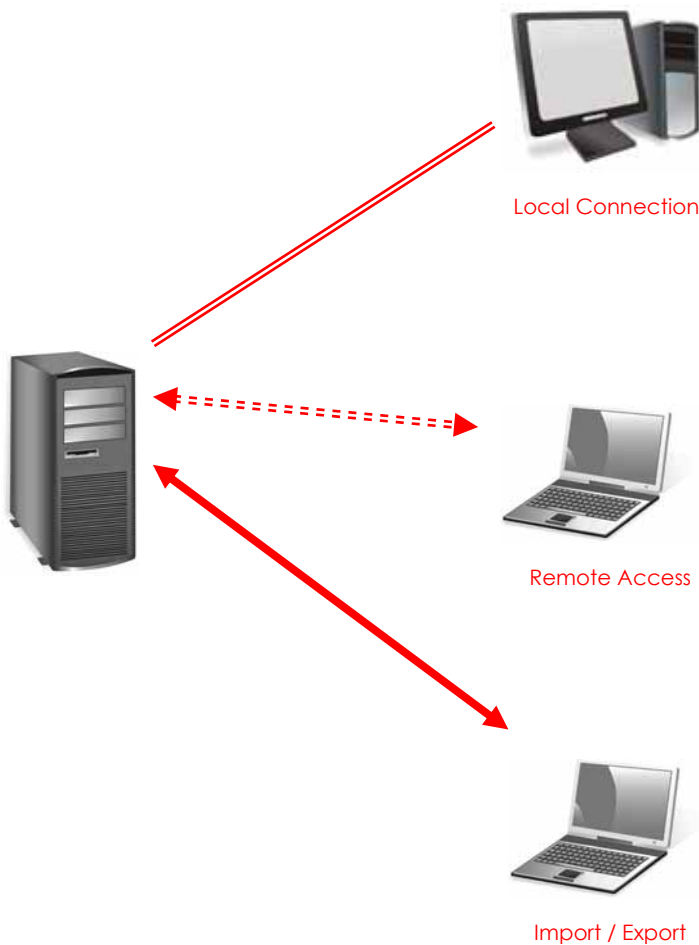


# Driving better sales performance

Windowmaker Sales Clients help you sell quickly, accurately and profitably

The starting point for any successful business is sales—and Windowmaker provides you with the tools to maximise your sales performance.

Whether it is providing Windowseller to your resellers and Windowmaker Sales Client to your own sales staff or surveyors, Windowmaker has the flexibility and features you need.



When using Windowmaker internally, it is available on a range of machines - from laptops & PCs to thin clients.

**Standard Clients** provide full functionality, from creating quotes and converting them to orders, through to transfer to the production schedule.

If used remotely, Windowmaker can manage a range of requirements for the mobile workforce.

The **Sales Client** can be used to access Windowmaker directly, with features designed just for sales roles.

Alternatively, the **Remote Sales Clients** enable Sales Staff to work offline and replicate over the internet, or access the Head Office server directly to create quotes or enter orders.

For Resellers or Installers, **Windowseller** provides the ultimate Sales tool with all the benefits of Windowmaker integration.

Windowseller customers can export orders directly to Windowmaker manufacturers, and receive exact product, system and pricing information in return.



**Sales Documentation** allows you to create stunning graphical documents, from quotes and order confirmations to invoices, with the ability to include corporate branding, bought in items and extras.

Design your own stationery, with default documents

Clear, scaled drawings with bought in items

Prices automatically calculated from the price list

Add one-off charges, and define what options are included

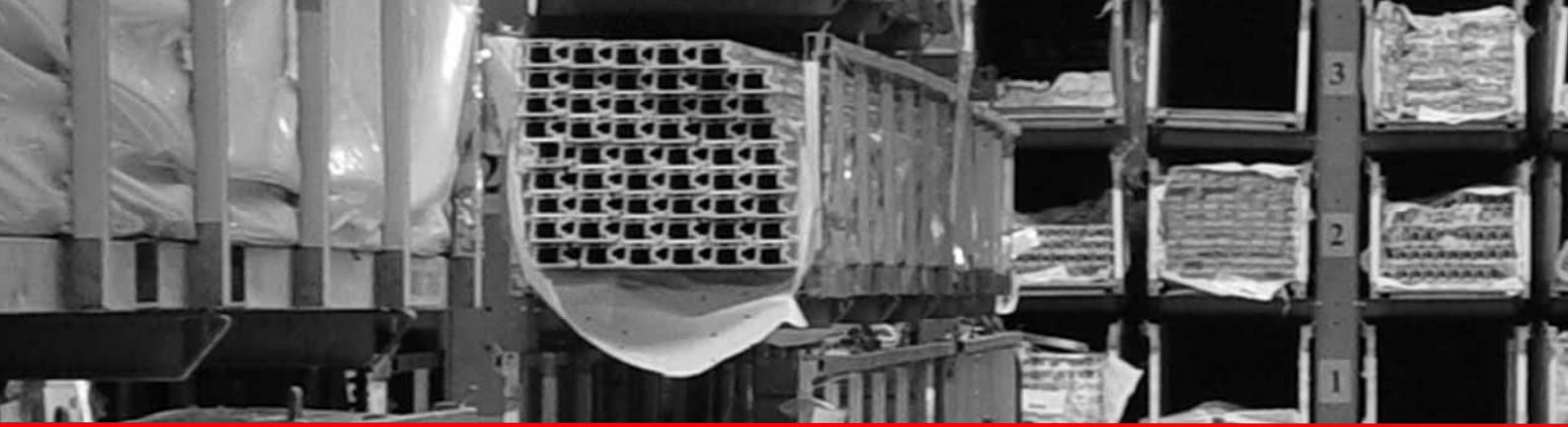
Item	Description	Qty	Price	Disc %	Net Price
1	Item 1 Description	1	100.00	0.00	100.00
2	Item 2 Description	1	50.00	0.00	50.00
3	Item 3 Description	1	25.00	0.00	25.00
4	Item 4 Description	1	12.50	0.00	12.50
Grand Total			187.50		187.50

### Windowmaker Options

- ▲ Pricing via Mark-Up & Cost Plus
- ▲ Pricing via Price Lists & Matrices
- ▲ Pricing Extras
- ▲ Customer Discounts
- ▲ Global Changes
- ▲ Optimised Costing
- ▲ Commercial Projects
- ▲ Link to CAD software
- ▲ Job Imports
- ▲ Order Tracking

For more information, visit:  
[www.windowmaker.com/sales](http://www.windowmaker.com/sales)





# Take control of operations

A single solution for the whole organisation

## Scheduling

Windowmaker Scheduling offers powerful functionality to manage the processing of orders, from quotation through to production, purchasing and delivery.

**Windowmaker Scheduling** allows you to automatically schedule and monitor various activities and processes, from ordering supplies and planning inventory requirements through to the delivery of finished products, even across multiple sites.

Production Scheduling incorporates inventory lead times and capacity restraints, and is dynamically updated as new orders are added.

With electronic purchase orders, managing the production process can be fully automated and paperless.



With **Windowmaker Batching** for smaller fabricators, batches can be created for jobs or individual items, either automatically or manually, giving you total flexibility.

When Sub-Batching is combined with material optimisation, material wastage can be reduced and production efficiency improved.

Purchase Order						
<b>Windowmaker Software V5</b>						
Meadway House, 17, Brighton road, Surbiton Surrey, KT6 5LR UK			Order Date : 03/09/2007 Order No. : 1/J00003			
To: Double Glazing Suppliers Unit 7, Alva Way Northamptonshire NN1 5PG			Deliver to: Meadway House, 17, Brighton road, Surbiton Surrey, KT6 5LR UK			
JobItem	Position Code	Reference	Location	Size	Qty.	Price
4-12-4 Clear Toughened K J00003/002	FIXED		Stairs	886w x 869h 2 [632]	1	30.99
J00003/003	FIXED		Dining Room	523w x 866h	3	48.66
J00003/003	Right		Dining Room	433w x 796h	3	36.18
					<b>Subtotal</b>	<b>7 115.83</b>
4-12-4 Clear Toughened K GeoSpoke3 J00003/001	FIXED		Hall	886w x 869h 9 [443,443,r=443]	2	65.94
					<b>Subtotal</b>	<b>2 65.94</b>
					<b>Total</b>	<b>181.77</b>
					<b>Delivery Charge:</b>	<b>0.00</b>
					<b>Grand Total:</b>	<b>181.77</b>



## Stock Control, Purchasing, Production & Delivery

The integrated Windowmaker Stock Control allows full control of your stock, across single or multiple sites, with links back into scheduling allowing advanced planning.

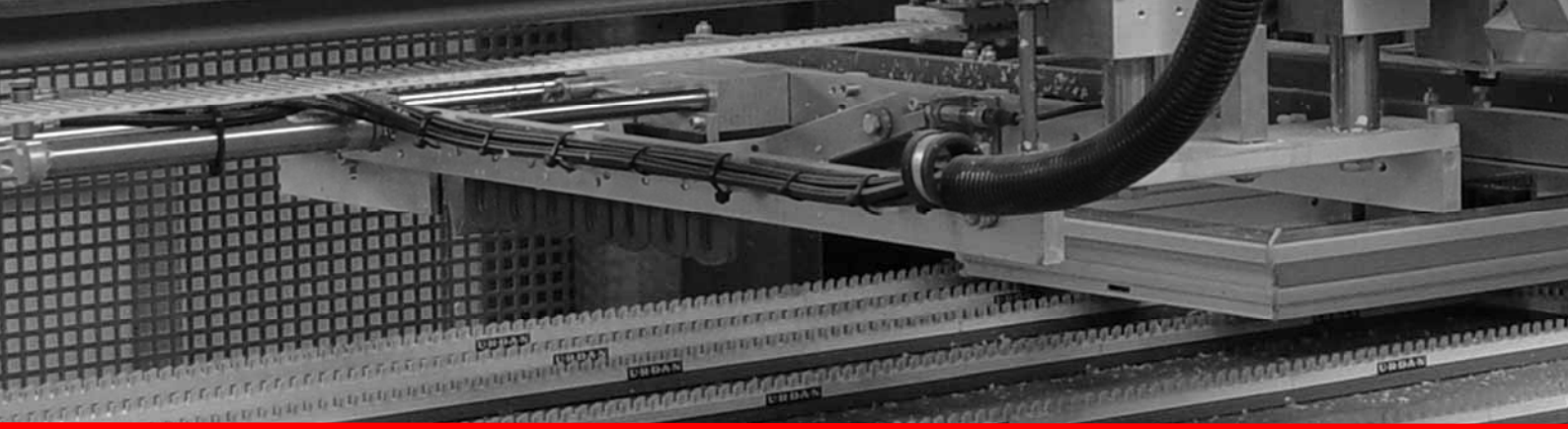
- ▲ Plan stock ordering at the earliest opportunity through Scheduling, reducing capital investment
- ▲ The stock values are dynamically updated as production batches are released, with re-usable offcuts managed separately from main stock
- ▲ Purchase Orders for bought in items, such as glass, are automatically created and can be sent electronically
- ▲ Production batches can be for multiple orders, single orders or just part of an item (such as when used with Commercial Contracts), with full item tracking available throughout the process
- ▲ When production is complete, delivery paperwork is printed alongside Windowmaker reports for each sales order
- ▲ For delivery route optimisation, data can be output to Microsoft MapPoint



### Windowmaker Options

- ▲ Purchase Scheduling
- ▲ Purchase Ordering
- ▲ Electronic glass orders
- ▲ Production Scheduling
- ▲ Delivery Scheduling
- ▲ Installation Scheduling
- ▲ Multiple Locations
- ▲ Stock Control / Link to Stock
- ▲ Link to Sales

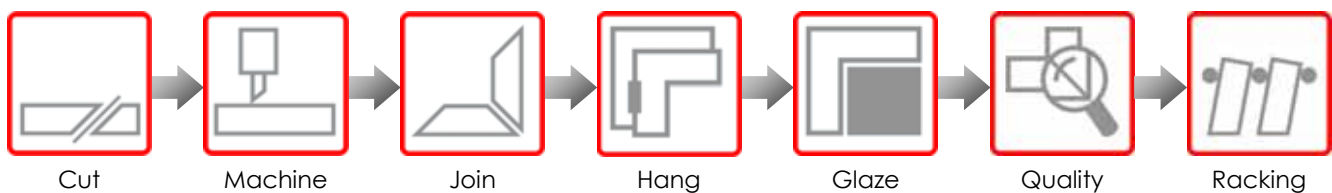
For more information, visit:  
[www.windowmaker.com/operations](http://www.windowmaker.com/operations)



# Automating production

## Advanced solutions for lean manufacturing

Once jobs have been created, and batched - either manually or with scheduling - Windowmaker then processes them through production, with a range of optimisation options and the ability to automate your manufacturing.



### Optimization

Once items have been batched and scheduled for production, Windowmaker has a range of features to maximise your efficiency:

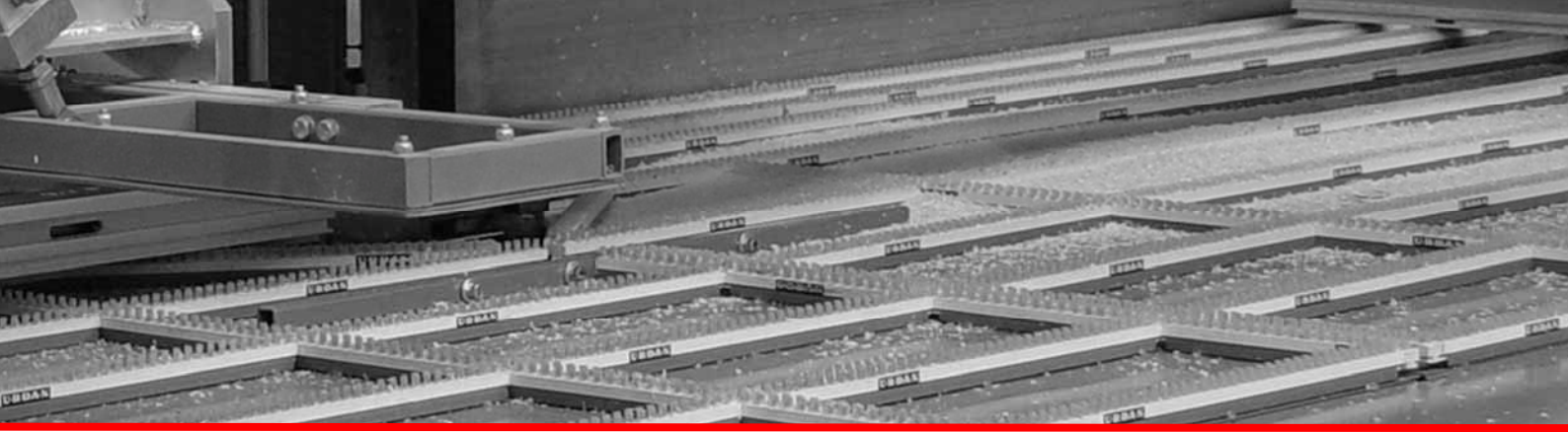
- ▲ Create optimum production sequences
- ▲ Use Sub-batching to further improve production output
- ▲ Use Pairing and Material Optimisation with Reusable Offcuts to minimise waste
- ▲ Calculate machining requirements



### Works Instructions

With the jobs passed through into Production, Windowmaker can provide a variety of Works Instructions, including:

- ▲ Machine Links, to a variety of saws, working centres, welders and glass cutting tables
- ▲ Labels and reports, which can be fully customised to your requirements including text and graphics
- ▲ Windowmaker Tracking displays, which provide comprehensive Works Instructions for each station operator
- ▲ The Tracking displays can show dynamically re-sequenced Work To Lists, to enable staff to react immediately to changed priorities



## Windowmaker Options

For Frame Production

- ▲ Sub-batching
- ▲ Profile Pairing
- ▲ Bar Optimisation
- ▲ Reusable Offcuts
- ▲ Sash & Profile labels
- ▲ Tracking
- ▲ Link to Saws
- ▲ Link to Working Centres
- ▲ Link to Welders
- ▲ Link to Hinge Machines

For more information, visit:

[www.windowmaker.com/frameproduction](http://www.windowmaker.com/frameproduction)

## Windowmaker Options

For Glass Production

- ▲ Optimaker
- ▲ Sealed Unit Pairing
- ▲ Cutting Instructions
- ▲ Optimised Labels
- ▲ Multiple Inventory Sizes
- ▲ Reusable Glass Offcuts
- ▲ Multiple Glass Tables
- ▲ Toughened Glass Report
- ▲ Link to Cutting Tables
- ▲ Link to Third Party Glass Optimisers

For more information, visit:

[www.windowmaker.com/glassproduction](http://www.windowmaker.com/glassproduction)



### Tracking

With Windowmaker Tracking Screens, you can manage the status of the entire production process.

- ▲ Tracking Screens provide clear data on the progress of all work in progress, such as identifying completed frames
- ▲ Link to a wide range of equipment including barcode scanners and label printers, for producing outputs including delivery documentation and barcodes labels
- ▲ Reports can include comprehensive management information, including labour times and performance & problem statistics





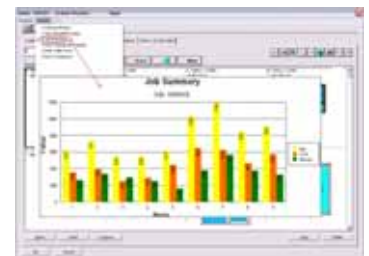
# Windowmaker Technology & Integration

Delivering Business Intelligence to help you understand your business

As a Microsoft Gold Partner with a large development team, Windowmaker Software can deliver solutions that truly exploit the power of the latest technology. The configuration available within Windowmaker, supported by powerful third party tools, enables you to get more from your software.



- ▲ Windowmaker uses **Microsoft SQL Server 2005** as the underlying database, taking advantage of the support that this provides for exporting data and synchronising with other software
- ▲ For example, XML data can be exported to other packages, or SQL Triggers used to simplify **integration with third party software**.
- ▲ Windowmaker can also offer **web-services** to access the central SQL database, so that the data is available to a variety of devices, including Microsoft Windows Mobile PDAs and Smartphones
- ▲ The 'User Data' facility allows fields to be added to the Windowmaker database and then accessed directly from within Windowmaker, further enhancing the customer-specific customisation available
  
- ▲ In Windowmaker ERP seamless integration into Microsoft Dynamics applications is available, enabling a single ERP solution to be used across the organisation
- ▲ For example, you can create Windowmaker Orders from within the Microsoft Dynamics order entry process
  
- ▲ Crystal Reports technology is used extensively in Windowmaker, meaning advanced reports are available as standard with the capability for unlimited, custom reports
- ▲ Standard Windowmaker Reports throughout the software can be customised, filtered according to context including user roles and job statuses, and include graphics as well as text.
- ▲ Crystal Reports Designer can also be used to build new management and sales reports, add tabs to the jobs page for dynamic reports, and format files to interfacing to other software (such as exporting purchase orders or links to machinery)





Managing your software can be complex, even on a single site. When running multiple sites, or supporting remote sales staff, resellers or installers, the problems could become more complex. Typical problems include:

- ▲ **High IT costs** through supporting and maintaining software and hardware, including slow equipment
- ▲ **Data integrity problems**, from multiple sites needing to replicate information or access the latest data
- ▲ **Complex administration** of what internal or external users need access to, and how to manage that

**Windowmaker OnDemand** is a unique solution, delivering instant access to your complete Windowmaker system at anytime, from anywhere. It creates a **single access point** that virtually any internet-enabled or Microsoft-based device can access. It could change the way you run your business.

- ▲ Provide full access to Windowseller for **resellers and installers**, with **simple administration, no loss of functionality**, with easy order import
- ▲ Allowing **sales staff** to access Windowmaker, with all their usual options and features, from any internet-enabled PC at work, at home or out on the road
- ▲ **Flexible access for all staff** across the company, from senior management to shopfloor assembly staff

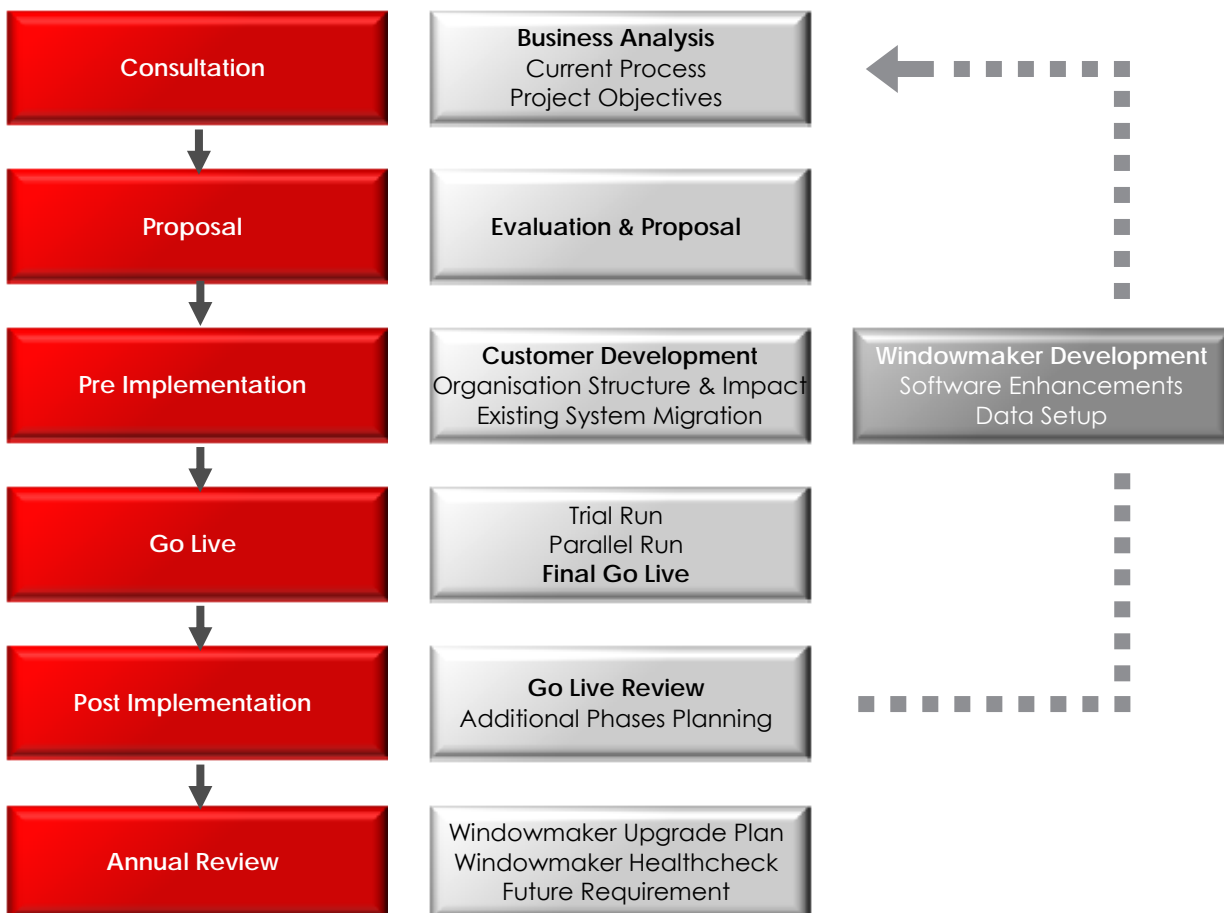




# Delivering the complete solution

Providing a complete service, from consultancy to implementation

Windowmaker Software has over 20 years experience, selling software solutions worldwide across the industry. With a fully ISO 9001 accredited system, Windowmaker doesn't just sell you software– we help plan, develop, implement and train to ensure that we deliver real business benefits for your organisation.





## The Windowmaker range



**Windowmaker Express** provides a complete quotation, design and production system for growing small and medium sized manufacturers, helping to improve business processes, increase efficiency and grow with the business.

Windowmaker Express is built on Microsoft SQL Server 2005 Express, and available with up to 10 concurrent users.



**Windowmaker SQL** builds on the foundations of Windowmaker Express to allow more users, bigger database capacities, improved performance and greater customisation.

Build on the full version of Microsoft SQL Server 2005, it is ideal for companies with multiple sites needing a single, integrated solution and managing remote sales teams.



**Windowmaker ERP** allows Windowmaker functionality to be accessed from within Microsoft Dynamics ERP.

Now window manufacturers do not need to compromise by running multiple systems, but can have a single software solution that provides integrated, best of breed functionality.



**Windowmaker Lite** is software designed for the small manufacturer, supplied in partnership with profile companies, enabling you to start designing and producing windows in minutes.



**Windowseller** is the complete software package for reseller to produce accurate and professional quotations, convert these to orders and transfer them electronically to fabricators.

#### UK / International

Meadway House  
17 Brighton Road  
Surbiton  
Surrey  
KT6 5LR  
United Kingdom

T +44 (0)20 8390 4931  
F +44 (0)20 8390 6147

#### North America

115 Wolseley Street  
Unit A  
Toronto  
M6J 1K1ON  
Canada

T +1 (416) 762 5299  
F +1 (416) 946 1467

#### Asia

201-207 Kalapi Avenue  
20 Punit Nagar  
Old Padra Road  
Baroda  
390015 Gujarat  
India

T +91 (0)265 234 2716  
F +91 (0)265 308 2808

#### Australia

Level 2  
25 Higginbotham Road  
Gladesville  
NSW, 2111  
Australia

T +61 (0)29 808 4830  
F +61 (0)29 808 4832

#### China

Decasoft Technologies Inc.  
5F, Building 11,  
Business Incubation Center  
North Qilihe Road  
Jinan City  
P.R. China 250100

T +86 531 8900518  
F +86 531 8065619

#### Ireland

WGC Software Consultants  
Unit 20  
North City Business Centre  
Belfast  
BT 15 1GG  
Northern Ireland

T +44 (0)2890 351188  
F +44 (0)2890 351104

#### Germany

Büro-und Datentechnik Sell  
Anger 14  
D-07366 Pottiga  
Germany

T +49 (0)366 422 8002  
F +49 (0)366 422 8007

[info@windowmaker.com](mailto:info@windowmaker.com)

[www.windowmaker.com](http://www.windowmaker.com)