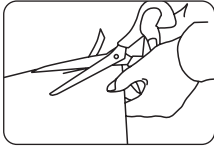




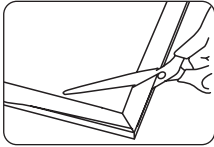
## FITTING INSTRUCTIONS

To successfully fit your Cyclone Insect Screening the following tools will be needed: Knife, Scissors, Screwdriver, Spline and Roller.



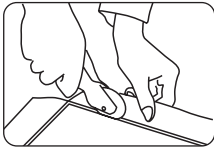
### 1. Cut to size

Ensuring that the frame is square, lay the Cyclone Insect Screening over the frame, with the spline groove facing up. Cut the screening approximately 2cm wider than the frame. (If fitting Fibreglass screening go to step 4)



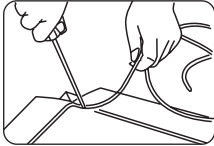
### 2. Cut corner at 45° angle

With a pair of scissors, trim one corner of the screening at a 45° handle. (Do not cut all 4 corners at one time.) Line up the centre of the cut with the corner of the spline groove. This prevents buckling.



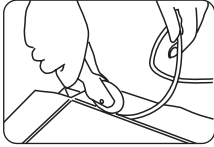
### 3. Wedge screening into groove

Starting at the cut corner, gently crease the insect screening into the spline groove using the convex wheel roller. Use several light strokes to avoid damage. Holding the roller at a slight angle and folding in a section of the screening at a time, will make the process easier and prevent tearing. Continue until it is completely wedged down into the groove.



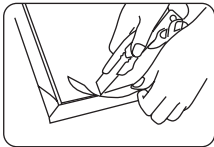
### 4. Push spline into corner

Using screwdriver, gently push the end of the spline down into a corner.



### 5. Roll in spline

Using the concave wheel of the spline roller, press the remainder into the groove. Working around the frame in a clockwise direction gives a better, flatter result.



### 6. Cut spline and trim excess

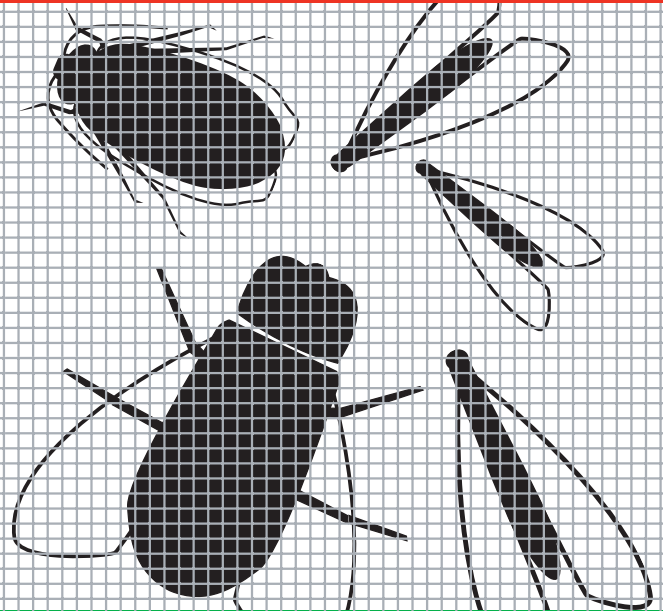
Cut the loose end of the spline to meet the start with a pair of scissors. Trim excess screening close to the edge of the spline with a utility knife. Your new Cyclone Insect Screening has now been fitted.

Note that for Tuffscreen® Galvanised and Bronze Insect Screening special fitting instructions are required. Refer in-store or to Cyclone's website.

All you need to know!

# INSECT SCREENING

Selection & DIY Installation



#### Cyclone Industries Pty Ltd

317 Abbots Road, Dandenong South, Victoria 3175. Australia

Telephone: (613) 8791 9300

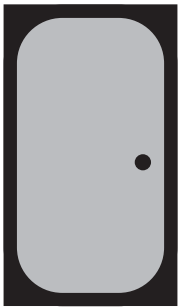
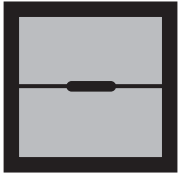
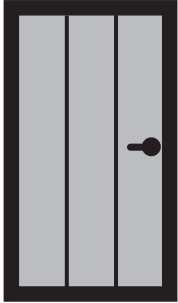
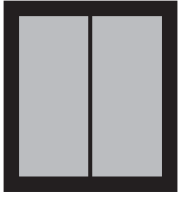
Facsimile: (613) 8791 9333

Email: [cyclone@cyclone.com.au](mailto:cyclone@cyclone.com.au)

Cyclone is a registered trademark of Cyclone Industries Pty Ltd.  
An ITW Company ABN19004502112



[www.cyclone.com.au](http://www.cyclone.com.au)



**3 FIBREGLASS**

**3 PET MESH®**

**5 MINIWEAVE®**

**5 ALUMINIUM**

**7 TUFFlite®**

**7 TUFFSCREEN®**

**9 GALVANISED**

**9 BRONZE**



# INSECT SCREENING

**Cyclone Insect Screening is precision woven for consistent quality and reliability.**

Install Cyclone's tough and resilient Insect Screening, and you can rest assured, that disease carrying insects and vermin are kept outside and away from your family. Cyclone supply eight different mesh screens that suit a variety of applications. Some are manufactured from fibreglass to provide easy installation and resistance to weather whilst aluminium and polyester ensure extra strength to resist wear from pets and children. Use this brochure to help choose the right mesh screen for your application.



# FIBREGLASS



## STANDARD INSECT SCREENING

### IDEAL FOR:

Screening windows and doors in all areas.

### FEATURES

- ▶ Flexible and pliable
- ▶ Will not rust, rot, shrink or stain
- ▶ Convenient, self-service pre-cut lengths ideal for quick repairs.
- ▶ Retains its strength and significantly outperforms other brands according to accelerated UV tests
- ▶ Economical and easy to install
- ▶ UV stabiliser chemicals & higher tensile strength make Cyclone Screening a superior brand

### SPECIFICATIONS

- ▶ PVC coated Fibreglass mesh
- ▶ 0.25mm diameter yarn
- ▶ 18 x 14 strands per inch

Corrosive Resistance: ★★★★★

UV Resistance: ★★★★★

AVAILABLE IN WIDTHS: 610/760/810/910/1220/1520/1830mm

# PET MESH®



## HEAVY GAUGE POLYESTER SCREENING

### IDEAL FOR:

Screening windows and doors where pets are present.

### FEATURES

- ▶ Flexible and pliable
- ▶ Will not rust, rot, shrink or stain
- ▶ Convenient, self-service pre-cut lengths ideal for quick repairs to screen doors and windows
- ▶ Easy to install

### SPECIFICATIONS

- ▶ PVC coated Polyester yarn
- ▶ 0.80mm diameter yarn
- ▶ 15 x 11 strands per inch

Corrosive Resistance: ★★★★★

UV Resistance: ★★★★★

AVAILABLE IN WIDTHS: 910 & 1220mm

UV  
STABILISED  
PREVENTS DAMAGE  
FROM SUNLIGHT

19X  
STRONGER  
THAN STANDARD  
SCREENING

Cyclone®

# MINIWEAVE®



## FINE FIBREGLASS MESH

### IDEAL FOR:

Screening windows and doors from small insects in tropical areas.

### FEATURES

- ▶ Easy to install
- ▶ Minimises glare
- ▶ Easy to install
- ▶ Will not rust, rot, shrink or stain

### SPECIFICATIONS

- ▶ PVC coated Fibreglass yarn
- ▶ 0.25mm diameter wire
- ▶ 18 x 30 strands per inch

Corrosive Resistance: ★★★★★

UV Resistance: ★★★★★

AVAILABLE IN WIDTHS: 910 & 1220mm

# ALUMINIUM



## INSECT SCREENING

### IDEAL FOR:

Screening windows and doors where extra strength is required.

### FEATURES

- ▶ Easy to install
- ▶ Baked enamel charcoal finish
- ▶ Minimises glare
- ▶ Should not be exposed to marine or high atmospheric conditions

### SPECIFICATIONS

- ▶ Aluminium
- ▶ 0.23mm diameter wire
- ▶ 18 x 16 strands per inch

Corrosive Resistance: ★★★

UV Resistance: ★★★★★

AVAILABLE IN WIDTHS: 610 / 760 / 810 / 910 / 1220mm

60% UV  
PROTECTION



# TUFFLITE®



## POWDER COATED ALUMINIUM SCREENING

### IDEAL FOR:

Screening windows and doors in tough & demanding conditions.

### FEATURES

- ▶ 47% stronger than conventional screening
- ▶ Withstands damage from pets and children
- ▶ Resists extreme weather conditions
- ▶ Fire resistant

### SPECIFICATIONS

- ▶ Powder coated Aluminium
- ▶ 0.28mm diameter yarn
- ▶ 18 x 15 strands per inch

Corrosive Resistance: ★★★★★

UV Resistance: ★★★★★

AVAILABLE IN WIDTHS: 910 & 1220mm

# TUFFSCREEN®



## HEAVY GAUGE POWDER COATED ALUMINIUM

### IDEAL FOR:

Security doors and windows requiring very tough protection.

### FEATURES

- ▶ Extra tough and durable
- ▶ Resistant to damage caused by pets
- ▶ Attractive satin black finish
- ▶ Minimises glare but maintains visibility
- ▶ Easily fitted with rivets, screws or staples.

### SPECIFICATIONS

- ▶ Powder coated Aluminium
- ▶ 0.41mm diameter wire
- ▶ 14 x 14 strands per inch

Corrosive Resistance: ★★★★★

UV Resistance: ★★★★★

AVAILABLE IN WIDTHS: 910 & 1220mm

PREMIUM  
SCREENING

EXTRA TOUGH  
PREMIUM  
SCREENING

Cyclone®

TUFFLITE® SCREENING

TUFFSCREEN® SCREENING

# GALVANISED



## STEEL SCREENING

### IDEAL FOR:

Screening windows and doors in bush fire prone areas.

### FEATURES

- ▶ Non-flammable
- ▶ Fire resistant
- ▶ Charcoal finish
- ▶ Should not be exposed to marine or high atmospheric conditions.

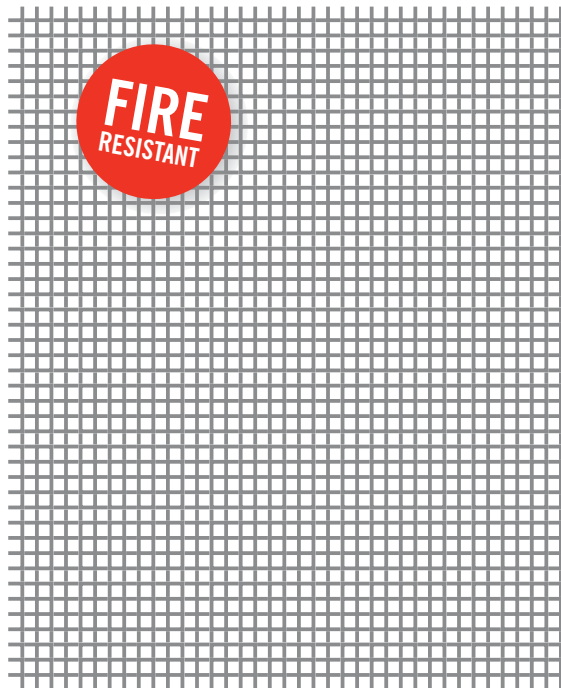
### SPECIFICATIONS

- ▶ Galvanised steel wire
- ▶ 0.25mm diameter wire
- ▶ 18 x 14 strands per inch

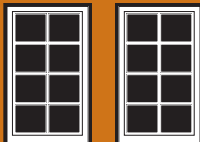
Corrosive Resistance: ★★ ★

UV Resistance: ★★ ★ ★

AVAILABLE IN WIDTHS: 910 & 1220mm



# BRONZE



## INSECT SCREENING

### IDEAL FOR:

Screening windows, doors, vents, etc for period style architecture.

### FEATURES

- ▶ Fire Resistant
- ▶ Attractive
- ▶ Greater strength and durability
- ▶ Develops green/brown patina over time
- ▶ Due to oxidation, must not be fitted to aluminium or steel framing

### SPECIFICATIONS

- ▶ Bronze
- ▶ 0.25mm diameter wire
- ▶ 18 x 14 strands per inch

Corrosive Resistance: ★★ ★ ★

UV Resistance: ★★ ★ ★

AVAILABLE IN WIDTHS: 910 & 1220mm

